



**YOUR  
CHURCH  
WAS MADE  
FOR  
THIS.**

*The*  
**JOBS PARTNERSHIP**  
*of Florida*



---

# THE CHURCH

was created to be a place where transformation takes place, both inside the Body and out in the community. What if there was a proven way to equip the church to transform both the lives of the poor and everyone who serves them? What if serving the poor is about more than meeting their needs—what if it's about God's people becoming engaged with each other and those in the community to discover His purpose and provision? The Jobs Partnership invites you to join our diverse network of Church Partners who are working together to engage, train and mobilize people to transform the lives of struggling men and women through a work-focused, faith-based process. And we're not just transforming lives—we're setting a new course for future generations. **This is what the church was made for.**

*...And if you spend yourselves in behalf of the hungry and satisfy the needs of the oppressed, then your light will rise in the darkness, and your night will become like the noonday. - Isaiah 58:10*





*Jasmine Jones, LifeWorks Graduate & Health Unit Coordinator*

*“I was a young single mom without a job. During the LifeWorks course I learned about my God-given abilities, how to interview and so much more. I even got hired by one of the Employer Partners within the first few weeks. Toward the end of the course, the Jobs Partnership team presented me with the opportunity to earn a certificate in the field of healthcare. Meanwhile, the team was working behind the scenes with a leading hospital to line up a full-time position for me. I am now a Health Unit Coordinator with the goal of continuing my training to be a registered nurse!”*

---



*Michael Zizmer, Volunteer Coach & Financial Partner  
Member of First Presbyterian Church of Orlando*

*“Being a mentor in the classes was one of the most rewarding experiences I have ever had. It’s awesome to watch people get out of debt, take care of their families and create a career for themselves. Watching the transformation in the way they feel about themselves is a testimony to the way God feels about us.”*

---



*Elizabeth Cronlund, Church Partner Representative  
Community Development Coordinator, Summit Church*

*“The relationship between Summit and The Jobs Partnership has created many opportunities for our congregation to engage in meaningful ministry that tangibly helps our neighbors. The structure, curriculum and support provided by Jobs Partnership allows each church to use their unique strengths to flourish as agents of change. No matter the makeup or size, any church can bring value to this family of churches, businesses and community resources for the benefit of our community.”*

---



*Dorothy Nevitt, Employer Partner & Jobs Partnership Board Member  
Member of St. Luke’s United Methodist Church*

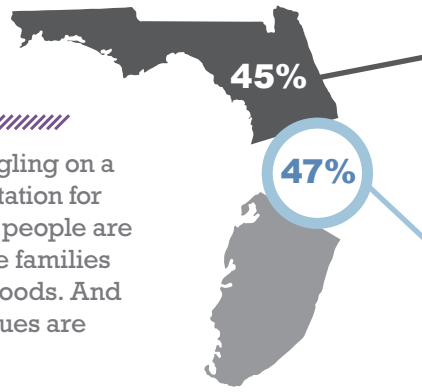
*“Several Graduates of the LifeWorks training have become brilliant hosts at our resort and at other properties throughout the market. Many of our directors, managers, and supervisors have volunteered their time to lead classes, mentor Students, review resumes, conduct mock interviews, and assist Students in finding employment.”*

---

# ALMOST GIVING UP.

## HOW FAMILIES ARE STRUGGLING

Nearly half of all households in our community are struggling on a daily basis to provide food, rent, childcare and transportation for themselves and their families. About two-thirds of these people are the 'working poor' or chronically underemployed. These families are in our churches, schools, workplaces and neighborhoods. And though we are called to love them and help them, the issues are complex—and often the church's resources are limited.



**ACROSS FLORIDA**  
45% of households struggle to afford the basic necessities of housing, childcare, food, healthcare, and transportation.\*

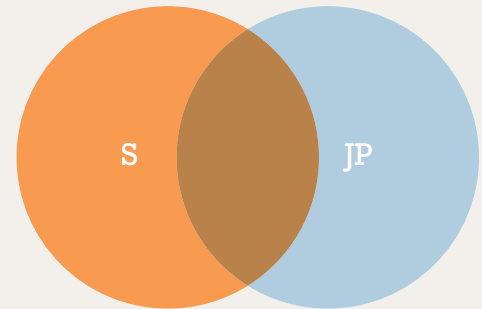
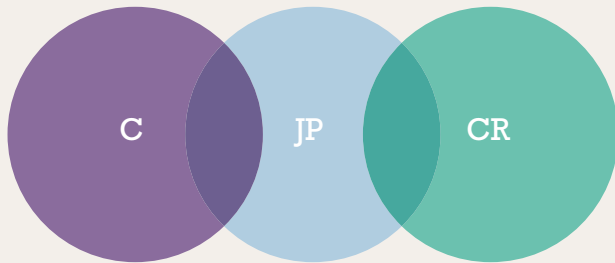
**IN ORANGE COUNTY**  
It's actually 47%—almost half of all households.\*

\* United Way ALICE Study

# THE WAY UP PROCESS

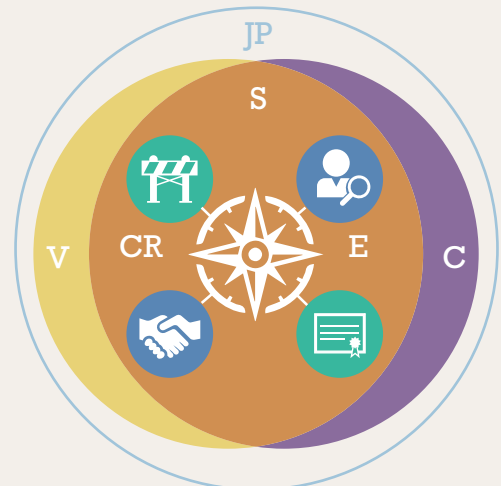
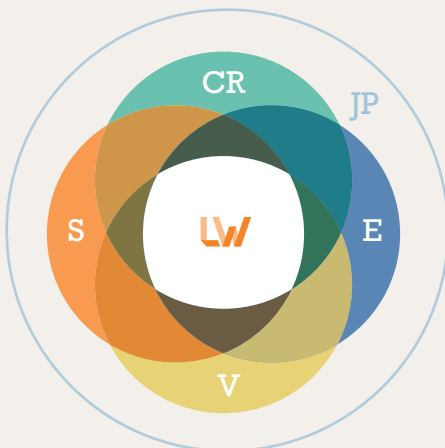
**1 RECRUIT**  
The Jobs Partnership, Community Resources and Churches recruit Students using our marketing materials.

**2 APPLY**  
Students can apply year-round via our online application at [JobsPartnership.org](http://JobsPartnership.org).



**5 CAREER FAIR**  
Students attend an exclusive Career Fair provided by The Jobs Partnership in collaboration with Employer Partners, Educational Resources and Volunteer Teams.

**6 CAREER PATHWAYS**  
The Jobs Partnership team, Churches and Volunteers assist Graduates in determining their next steps through our Career Pathways process.



# THE WAY UP.

## OUR PROCESS IS TRANSFORMING FAMILIES

The Jobs Partnership has developed a unique and proven solution built on the Biblical truth that all people are created and designed by God to work, to be fruitful and to have purpose in their lives. We provide the framework for churches to mobilize their congregations to serve the poor through an innovative,

no-cost training course for struggling men and women called LifeWorks. This work-focused, faith-based training is the beginning of a series of life-changing opportunities. Students are paired with a volunteer Coach, attend an exclusive Resource Fair and Career Fair, have access to our Orlando Jobs Connection online portal, and more. Prior to Graduation, Students are guided in choosing the right next step through our Career Pathways process, where a world of opportunities await.

C = Churches

V = Volunteers

S = Students

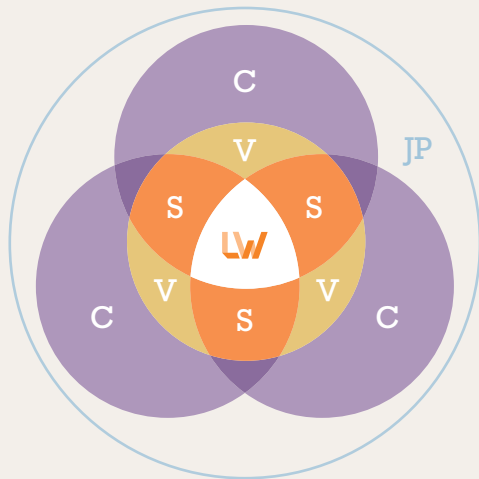
E = Employers

CR = Community Resources

JP = Jobs Partnership

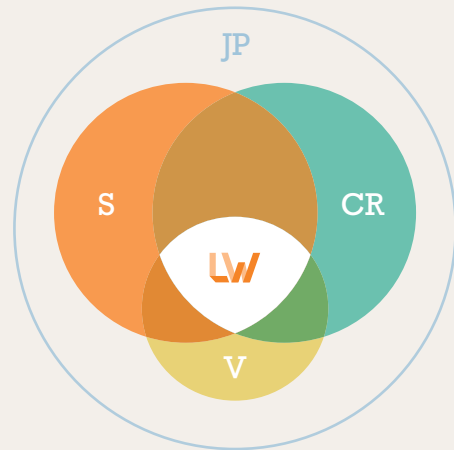
### 3 LIFEWORKS CLASSES

Students attend our training course provided by The Jobs Partnership in collaboration with Churches and Volunteer Teams.



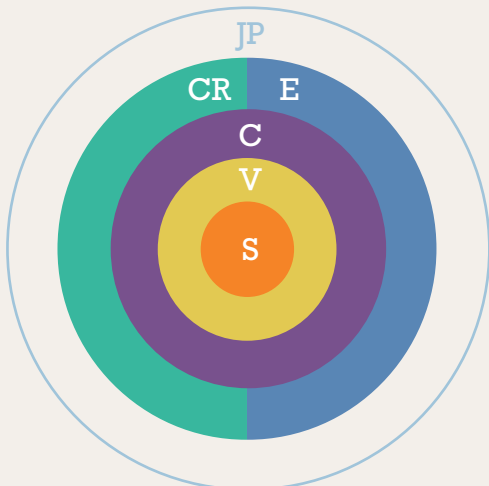
### 4 RESOURCE FAIR

Students attend a Resource Fair provided by The Jobs Partnership in collaboration with Community Resources and Volunteer Teams.



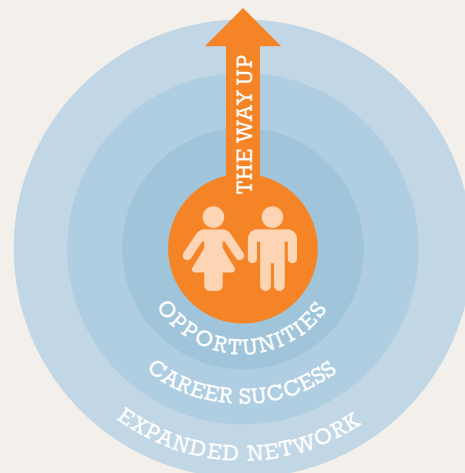
### 7 LIFEWORKS GRADUATION

Students complete the course and attend Graduation with their families and all of our Partners and Volunteers.



### 8 A BETTER LIFE

“My life works.” Graduates become unstoppable on a new path to career and life success, with more opportunities than ever on The Way Up.



# COURSE CURRICULUM

LifeWorks Training is like a boot-camp for life and work, with volunteer Coaches and practical teaching by seasoned instructors that transforms the head and heart. The proven curriculum focuses on relevant “Life” and “Work” topics from a Christian worldview in a clearly defined 3-tiered process:



**THE FOUNDATION TIER** gives Students a perspective of God’s view of the world and them, so they can understand their purpose in life and work.

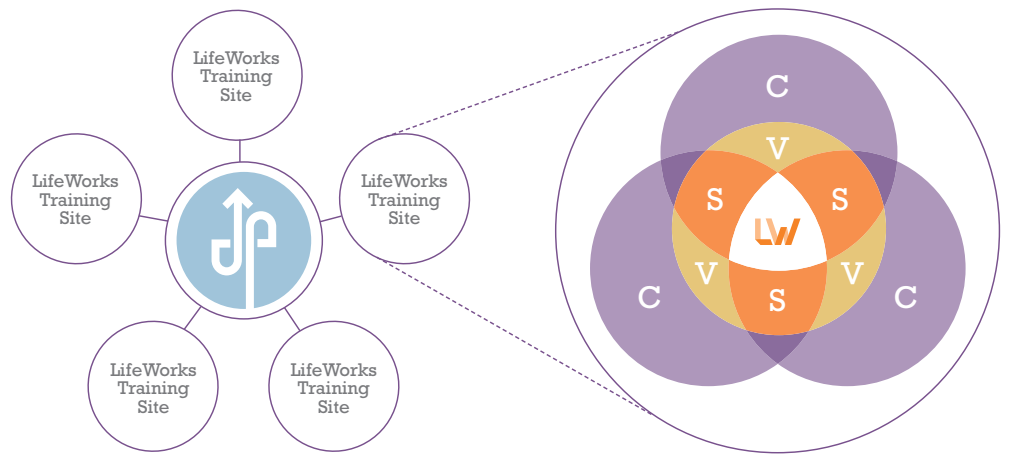
**THE MOVING FORWARD TIER** teaches Students how to align their lives according to the truth—understanding authority, taking responsibility, interview strategies and much more.

**THE WAY UP TIER** provides career-planning tools and principles to foster success on the job and in life, including how to use their gifts and talents for God’s glory.

# LW LIFEWORKS TRAINING

**WHAT IT IS** // LifeWorks is a training course developed by The Jobs Partnership for chronically underemployed men and women who are stalled in their jobs, their lives, or both. The class meets one evening per week for 12 weeks, and is offered twice per year at regional Training Sites around Central Florida. In their first class, each Student is paired with a volunteer Coach, who serves as their mentor and advocate throughout the course. Classes begin with prayer and a meal together, where relationships between Students and Coaches develop over casual conversation. Pastors, community leaders and seasoned professionals teach the relevant curriculum covering both practical and spiritual matters of life and work. Throughout the course, Students are presented with numerous opportunities to engage with our Community Partners, Employer Partners and Church Partners through personal connections, beneficial resources and exclusive events.

**HOW IT WORKS** // We provide everything needed for our Church Partners to promote, plan and run the LifeWorks Training class with the ongoing guidance and support of our team at The Jobs Partnership. In other words, the course is a ministry of local churches working together, using the structure, resources and tools provided by The Jobs Partnership. Most Church Partners choose to collaborate together in facilitating the class at an agreed-upon Training Site. Each Church Partner can choose to play the role or roles that best suit their capabilities and strengths.



## JOB PARTNERSHIP ROLE

- Mobilize resources and relationships to support LifeWorks training
- Provide LifeWorks Training model (i.e. curriculum, operations, instructors)
- Provide training for Volunteers
- Provide consulting and support to Training Sites
- Provide all marketing materials
- Develop and maintain Partnerships (i.e. employers, agencies, education)

## CHURCH ROLE

- Mobilize congregation to serve and collaborate with other churches to operate LifeWorks Training site
- Select and recommend Volunteers
- Recruit qualified LifeWorks applicants
- Engage employers in the church
- Leverage ministry resources
- Financial commitment



Join our network of 50+ Church Partners across Central Florida who, together, are mobilizing their people to transform the lives of struggling individuals and families in our community.

*Dr. Sylvester Robinson, Senior Pastor  
Love Fellowship Christian Church*

*“This partnership enables the Church to help people not just achieve gainful employment, but completely change how they view themselves. And once they learn the principles, they become tithing members, they become givers, not only in the church but in the community. When your church gets involved it will bless you, as you are blessing people.”*

*Dr. David Swanson, Senior Pastor  
First Presbyterian Church of Orlando*

*“The Jobs Partnership enables our business leaders in the church to connect their faith and giftings at work to serve the needs of people in the community. It’s impacting our church members when they see real change in the Students and their families—in who they are, and the way they think about their lives. And it’s given us an opportunity to create a culture that reflects the true kingdom of God.”*

## ***BENEFITS OF CHURCH PARTNERSHIP***

Becoming a Church Partner enables your church to truly fulfill its call not just to serve but to grow, in partnership with others. We provide the framework for our Church Partners to run this course as a ministry of the local church, because it’s within a community of believers that true and lasting change happens. Imagine becoming part of a city-wide initiative that’s uniting churches to:

- Address community needs through relevant ministry
- Provide help to struggling families in your church
- Mobilize your people to serve the poor
- Combine professionals’ faith and work to serve
- Train and equip your future leaders
- Collaborate within a proven framework
- Build cross-denominational church relationships
- Network with a rich diversity of churches and people
- Discover community resources for your members
- Grow your church by engaging with Students
- Impact whole families and communities
- Extend your exposure and reach in the community

***LEARN MORE***

Contact Marc Stanakis, President at 407-641-0755 x104

or

[JobsPartnership.org/churches](http://JobsPartnership.org/churches)



---

# *THE WAY UP.*

---

Founded in 1999, The Jobs Partnership is a faith-based, non-profit 501(c)3 organization headquartered in Orlando, Florida dedicated to building a healthy workforce through the transformation of the chronically underemployed, by empowering them with God's truth, elevating their workplace abilities and attitudes, and enhancing their employability. The Jobs Partnership's core values are based on the belief that all people were created and designed by God to not just work, but to live a fruitful life. The organization's work has proven that a good job not only restores dignity and purpose to the person employed, but it benefits the community by diminishing poverty, crime and countless other eroding effects. The Jobs Partnership's vision is to strengthen whole communities for generations.

The Jobs Partnership is able to offer LifeWorks Training, Career Pathways, Resource Fairs, Career Fairs, OnRamps, the Job Connection website, educational opportunities, mentorship and other programs and resources, thanks to its valued partnerships with Churches, Volunteers, Employers, Community Organizations and generous Financial Supporters in the Florida community.