



---

## THE WAY UP.

---

Founded in 1999, The Jobs Partnership is a faith-based, non-profit 501(c)3 organization headquartered in Orlando, Florida dedicated to building a healthy workforce through the transformation of the chronically underemployed, by replacing lies with truth, elevating their workplace abilities and attitudes, and enhancing their employability. The Jobs Partnership's core values are based on the belief that all people were created and designed by God to not just work, but to live a fruitful life. The organization's work has proven that a good job not only restores dignity and purpose to the person employed, but it benefits the community by diminishing poverty, crime and countless other eroding effects. The Jobs Partnership's vision is to strengthen whole communities for generations.

The Jobs Partnership is able to offer LifeWorks Training, Career OnRamps, Community Resource Fairs, Career Fairs, the Job Connection website, educational opportunities, mentorship and other programs and resources, thanks to our partnerships with Churches, Volunteers, Employers, Community Organizations and our generous Financial Supporters in the Florida community.

---

The  
**JOBS PARTNERSHIP**  
of Florida

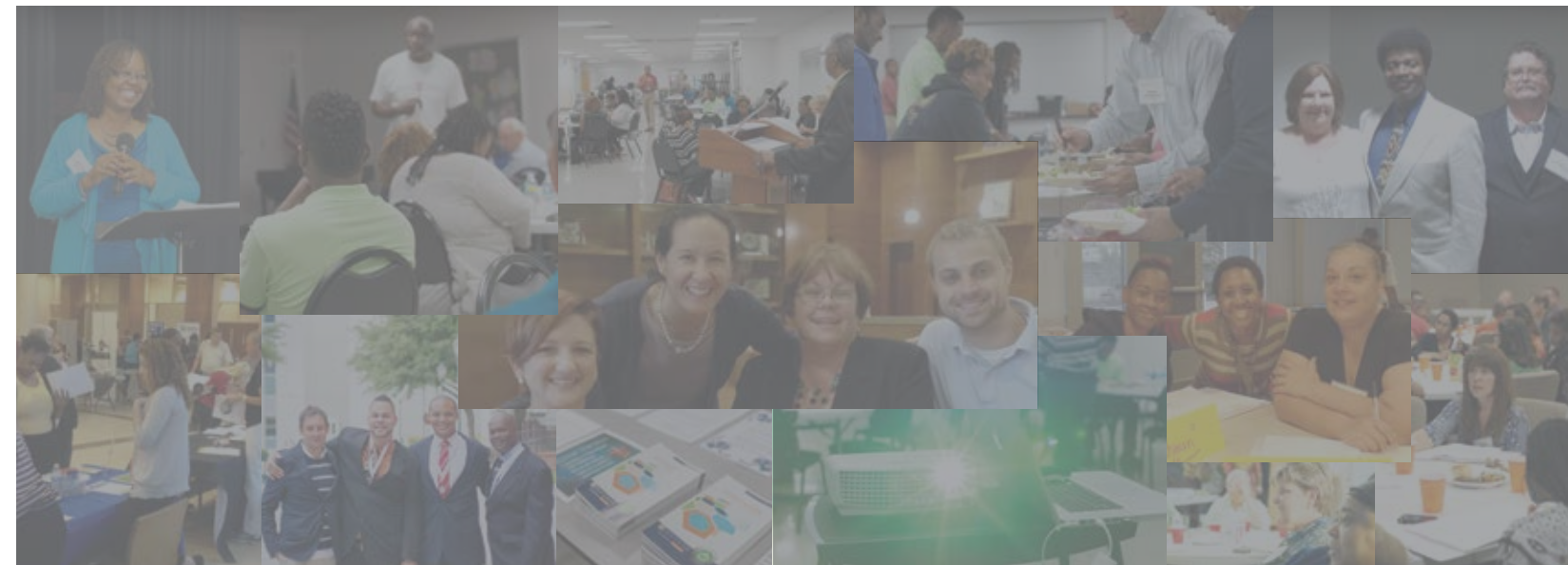
5336 Millenia Blvd., Suite 5000 Orlando, FL 32839  
Office Phone: (407) 641-0755 [www.JobsPartnership.org](http://www.JobsPartnership.org)



The  
**JOBS PARTNERSHIP**  
of Florida



**The Jobs Partnership of Florida** is a thriving, faith-based partnership of individuals, churches, employers and community organizations working together to transform the lives of the working poor and underemployed in our community by addressing attitudes, beliefs and commitments that have kept them from being able to provide a family-sustaining wage. Together with our Partners we work to replace lies with truth, encourage them through mentorship, elevate their workplace abilities and attitudes, and expand their network of relationships. Through this process, they become more than employable—they become unstoppable.



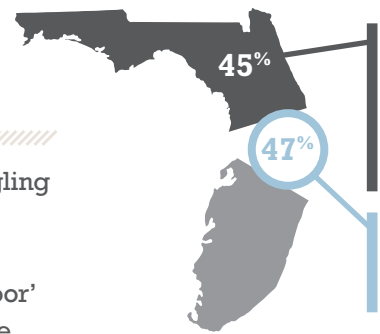
## ALMOST GIVING UP. THE PROBLEM AND WHY IT MATTERS

Nearly half of all households in our community are struggling on a daily basis to provide food, rent, childcare and transportation for themselves and their families.

About two-thirds of these are the 'working poor' or chronically underemployed and may be working at one or more low-paying jobs that don't pay nearly enough to cover the basics. Many of these men and women qualify for public assistance, but even this isn't enough to close the gap between their income and their bills. A lack in communication and interpersonal skills, secondary education or vocational training and a very limited social network leaves many with an outlook of hopelessness. The effects of unemployment and underemployment hinders progress, erodes families, and imperils future generations. It affects our entire community, now and in the future.

*"I'm now a role model for my kids, and am proud of myself."*

Quwanda High, Graduate

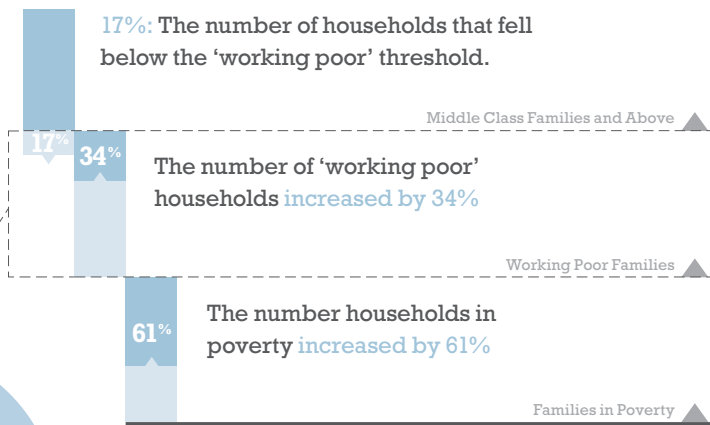


**ACROSS FLORIDA**  
45% of households struggle to afford the basic necessities of housing, childcare, food, health care, and transportation.<sup>1</sup>

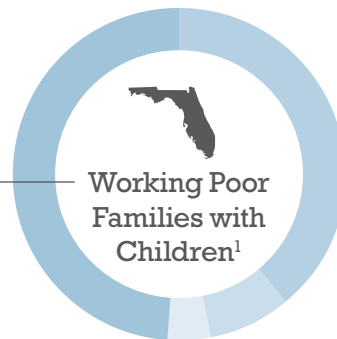
**IN ORANGE COUNTY**  
It's actually 47%—almost half of all households.<sup>1</sup>

**16%** Florida's 2013 Underemployment rate<sup>1</sup>

### FLORIDA FAMILIES // 2007 TO 2012<sup>1</sup>



**Nearly 75%** of enrollees in America's major support programs are members of working families.<sup>2</sup>



**49%** Single women with children  
**39%** Married with children  
**8%** Single men with children  
**4%** Other

1. United Way ALICE Study 2. UC Berkeley Labor Center

## THE WAY UP. THE SOLUTION AND HOW IT'S DIFFERENT

The Jobs Partnership provides a proven solution built on the Biblical truth that all people are created and designed by God to work, to be fruitful and to have purpose in their lives. Together with our Church Partners and Volunteers, we provide an innovative, no-cost 12-week training course called LifeWorks for men and women who are stalled in their lives, their jobs, or both. This training isn't a job skills class or government program—it's a bootcamp for life and work, with volunteer Coaches and relevant, practical teaching that transforms the head and heart. During the course, Students are paired with a Coach, invited to attend an exclusive Resource Fair with our Community Partners and can also attend a private Career Fair with our Educational Partners and our extensive network of Employer Partners.

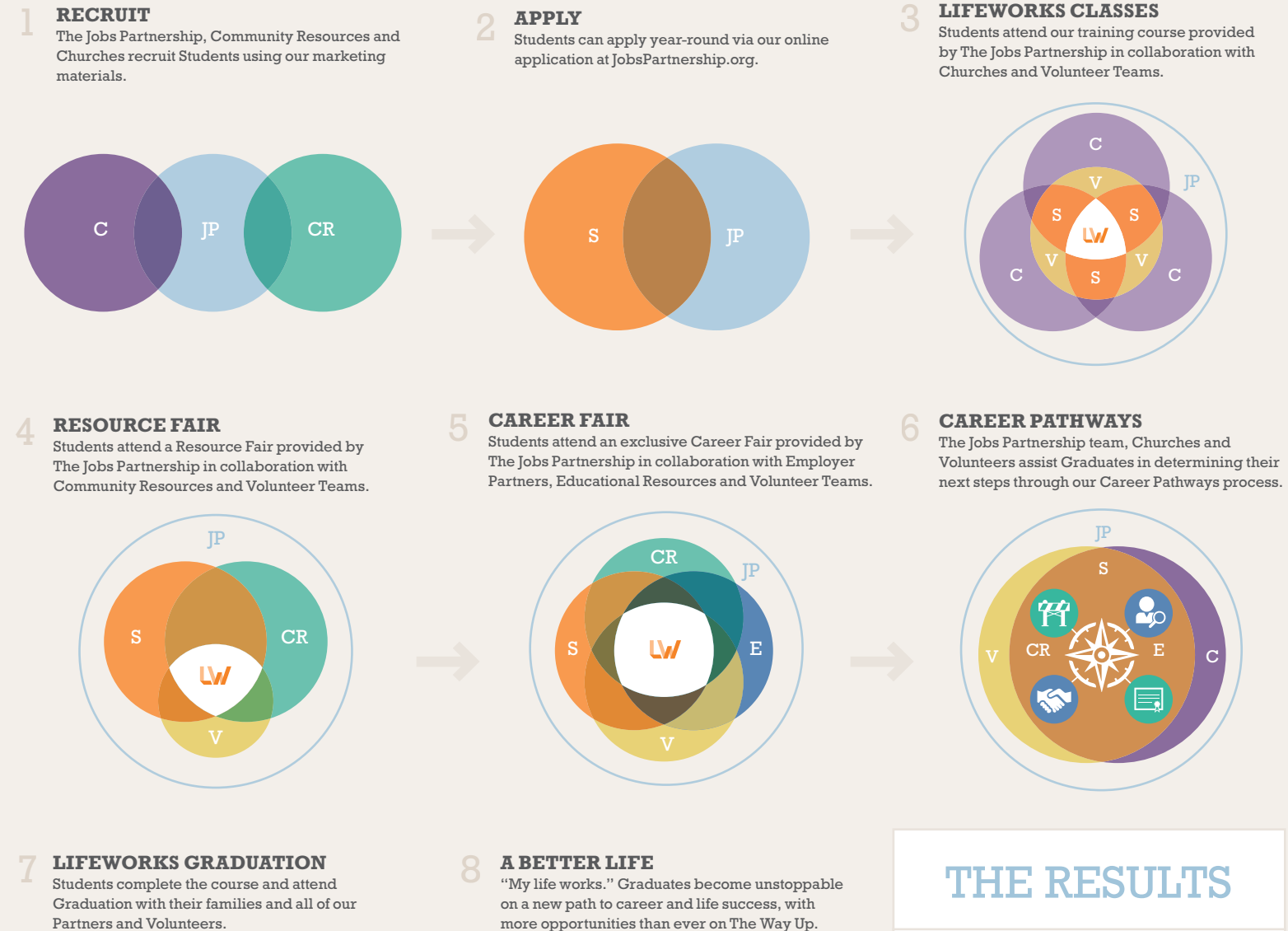
All Students and Graduates enjoy access to our own online job portal, Orlando Job Connection. Prior to graduation, Students are guided in choosing the right next step, whether it's addressing barriers to employment, pursuing opportunities for promotion, finding new career opportunities, or qualifying for specialized training through our Educational and Employer Partners. Our Volunteers form meaningful relationships with Students through the entire process, helping them to connect with the right people, resources and employers, with the goal of achieving a full-time, family-sustaining career with more opportunities to continue **The Way Up**.

*"Jobs Partnership promotes the help of others—which all of us need—with dignity and self respect."*

Deborah Catalano, Volunteer Coach

# THE WAY UP PROCESS

C = Churches V = Volunteers S = Students E = Employers CR = Community Resources JP = Jobs Partnership



## THE RESULTS

**NEARLY 2,000**  
GRADUATES SINCE 1999

**— 70% —**  
ARE WORKING,  
GOING TO SCHOOL, OR BOTH

JOIN OUR NETWORK OF INDIVIDUALS, CHURCHES, BUSINESSES AND ORGANIZATIONS who are investing in our work to transform families and entire communities in Central Florida.  
Learn more at [JobsPartnership.org/get-involved](http://JobsPartnership.org/get-involved)